



SOCIAL VENTURE
PARTNERS
BOULDER COUNTY

ANNUAL REPORT 2018

A Vibrant And Thriving Boulder County

Social Venture Partners (SVP) Boulder County works side by side with local nonprofits helping them to be their best and philanthropic changemakers helping them have deeper impact. As a nonprofit organization, we strengthen other Boulder County nonprofits by helping them implement the strategies, structures, processes, and leadership to move to the next level. We support philanthropic changemakers by helping them learn, connect, and contribute their skills and experiences successfully. We're proud to support the work these organizations and individuals do to make our shared community a better, more vibrant place to live, work and play.

Key Stakeholders:

- Philanthropic changemakers (partners)
- Nonprofit organizations (participants)
- Nonprofit leaders (participants)
- Nonprofit board members (participants)
- Donors
- Collaborators + allies
- Staff

Vision:

A more vibrant and thriving Boulder County community for all.

Mission:

To harness the collective power of nonprofits and philanthropic changemakers to accelerate community impact.

Values:

In pursuing this mission, 6 values guide us: evoke transformation, multiply impact, build community, invite & include, contribute and receive generously, and quality matters.

What We Do:

- Build connections
- Engage others in volunteer roles
- Develop leadership skills
- Educate individuals and organizations
- Consult & advise with nonprofits



"SVP is accessible, and their wealth of information helps our group flourish."

Anonymous

"Working with SVP Boulder County is time well spent. SVP is changing the face of local nonprofits & building capacity, one leader at a time. And the community is better off because of it."

Neal Lurie, President,
Resource Central



2000
COMBINED CONTRIBUTION TO BOULDER COUNTY:
\$60,000 pro bono support • \$100,000 cash grants
PROGRAMS FOR NONPROFITS: 1
PARTNER HOUSEHOLDS THROUGHOUT THE YEAR: 20
INCOME FROM PARTNER MEMBERSHIPS: 100%
PAID STAFF: 0 FTE
NONPROFIT LIFECYCLE STAGE: Start-up

LESSONS LEARNED:
Thoughtful, standardized due diligence is important

BIG DECISIONS:
Open as a Donor-Advised Fund (DAF) of
Community Foundation Boulder County

2009

COMBINED CONTRIBUTION TO BOULDER COUNTY:
\$1.6 million pro bono support • \$900,000 cash grants
PROGRAMS FOR NONPROFITS: 2
PARTNER HOUSEHOLDS THROUGHOUT THE YEAR: 35
INCOME FROM PARTNER MEMBERSHIPS: 99.4%
PAID STAFF: 1 FTE

NONPROFIT LIFECYCLE STAGE:
Start-up mixed with growth
LESSONS LEARNED:
We need to expand programming to
remain relevant and impactful
BIG DECISIONS:
Focus on surviving the recession

2018

COMBINED CONTRIBUTION TO BOULDER COUNTY:
\$6.8 million pro bono support • \$16 million cash grants
PROGRAMS FOR NONPROFITS: 5
PARTNER HOUSEHOLDS THROUGHOUT THE YEAR: 66
INCOME FROM PARTNER MEMBERSHIPS: 52%
PAID STAFF: 26 FTE
NONPROFIT LIFECYCLE STAGE: Growth mixed with mature

LESSONS LEARNED:
We need a sustainable foundation to
be impactful; we need to be even more
connected to and integrated with
the larger community
BIG DECISIONS:
Tackle a year-long, intensive strategic
planning process with significant stakeholder
engagement, emerging with a 4 year vision
for sustainable growth

Education + Connections + Engagement = Impactful Changemakers

SVP believes educated, connected, and engaged philanthropic changemakers create more positive impact in their community. In their involvement with SVP, our Partners report an increased sense of fulfillment, growth, and learning in their service toward a better Boulder County.

Individuals or businesses with a variety of backgrounds, experiences, and prowess join SVP as Partners. They join SVP because they care about our community, because they want to learn how to give back effectively, and because they want to be part of a team. SVP offers Partners a variety of programs that build knowledge, networks, and engagement.

Our Partners share time, talent, donations, and connections while our nonprofit participants share information, community impact, and opportunities to engage and learn. SVP's approach to working side by side ignites mutual benefit: even as Partners make a real difference within and among the nonprofits we serve, they have the opportunity to learn from those same organizations.



"Boulder County is special. Its citizens have a sense of place and a quality of life that feeds off physical beauty, diverse neighbors and neighborhoods, and a majority's willingness to pay taxes for education and public services and spaces. The county can and should expect a return for these elements of goodness based on personal volunteer effort from those who can provide it. My personal objective in joining SVP was to become – and be – a better citizen of a city and county that meaningfully enhances my life."

Clyde McKenzie, Partner, SVP Boulder County
Chairman/CEO, Tellurex Corporation



"I'm a big supporter of SVP Boulder County. I love that SVP's programming is aligned with our specific community needs, and continually adapting to create greater impact, reflect the nonprofit landscape, and be inclusive of each organization – regardless of size or age."

Hope Tuck Hanrahan, Partner, SVP Boulder County
Financial Advisor, Merrill Lynch, Pierce, Fenner & Smith Inc.



"Having recently retired from a full-time executive position, continuing to contribute using some of the skills I've developed over my working career is very appealing. SVP Boulder County has allowed me to meet interesting Partners who share similar views of giving back to our community, helped me further develop my network, and – most importantly – given me quality opportunities to help strengthen some great local nonprofits."

Mark Bouzek, Partner, SVP Boulder County
Board Member & Interim CEO/CIO,
P2 Energy Solutions



"As newer residents in Boulder, SVP Boulder County was a great way for us to meet some very interesting people, and be immediately plugged into a progressive and impactful network. SVP is an excellent outlet for us to make deep, direct connections to nonprofits, as well as to meet a broad and diverse network of nonprofits and Partners."

Tony & Elisa George, Partners, SVP Boulder County
Elisa George, Senior Director Brand and Product, LÍLLÉbaby
Tony George, Managing Director, Vermilion Design + Digital



"I've come to understand the nonprofit sector in a much more intimate way, and I'm much more strategic in how I give. Through SVP Boulder County, I'm able to consult with other nonprofits, and share experiences gleaned in the nonprofit world with others."

John McCorvie, Partner & Donor, SVP Boulder County
Chartered Financial Analyst (CFA) and Portfolio Manager,
Peak Asset Management, LLC



Training + Leadership Development + Consulting = Stronger Nonprofits

SVP believes effective, strategic, and sustainable organizations are better able to further their critical missions in Boulder County. Providing services that build management practices, strategies, systems, and leadership, we help nonprofits do more for their clients.

BOARD GOVERNANCE TRAINING

BOARDS WITH BRAINS

124 individuals served

Sessions offered on introduction to board service, fundraising, reading financials, succession planning, marketing, and more.



"I was able to apply several resources provided through the Execs Evolve program – on leadership, problem-solving strategies, building trust, and more – within my board and my team to improve relationships, which is the foundation of a well-run organization."

Tere Garcia, Execs Evolve participant
Executive Director, ELPASO,

EXECUTIVE COACHING

EXECS EVOLVE

12 nonprofits served

114 coaching sessions

"After attending the session on marketing, I focused my messages around why we do what we do, rather than what."

Anonymous, Boards with Brains participant

FACILITATED PEER LEARNING

INVESTED LEADERS

10 nonprofits served

Sessions offered on board engagement, organizational culture, diverse and inclusive organizations, developing staff, providing performance feedback, and more.



"My coaching experience with Execs Evolve was magical for me. My coach helped me dig deep and take more accountability, carve out a path to overcome obstacles, and improve as a leader."

Sarah Shirazi, Execs Evolve participant
Community Development Director,
KGNU Community Radio,

ENCORE CAREER PLACEMENTS

ENCORE FELLOWSHIPS

4 nonprofits served

Fellows helped nonprofits by revamping standard operating procedures, completing strategic plans, assisting with fundraising outreach, updating organizational structure, and more.



"I LOVE the new Organizational Capacity Assessment. The process is great and clear and makes sense for each question, and the adjustments made for nonprofits in the areas are AWESOME."

Michelle Orge, Catapult participant
Executive Director, Community Food Share,

ORGANIZATIONAL ASSESSMENT

PIVOT POINTS

Updated the Organizational Capacity Assessment Tool specific to Boulder County needs. Developing training for Partner facilitators.

CONSULTING

CATAPULT

6 nonprofits served

2,650+ consulting
hours provided



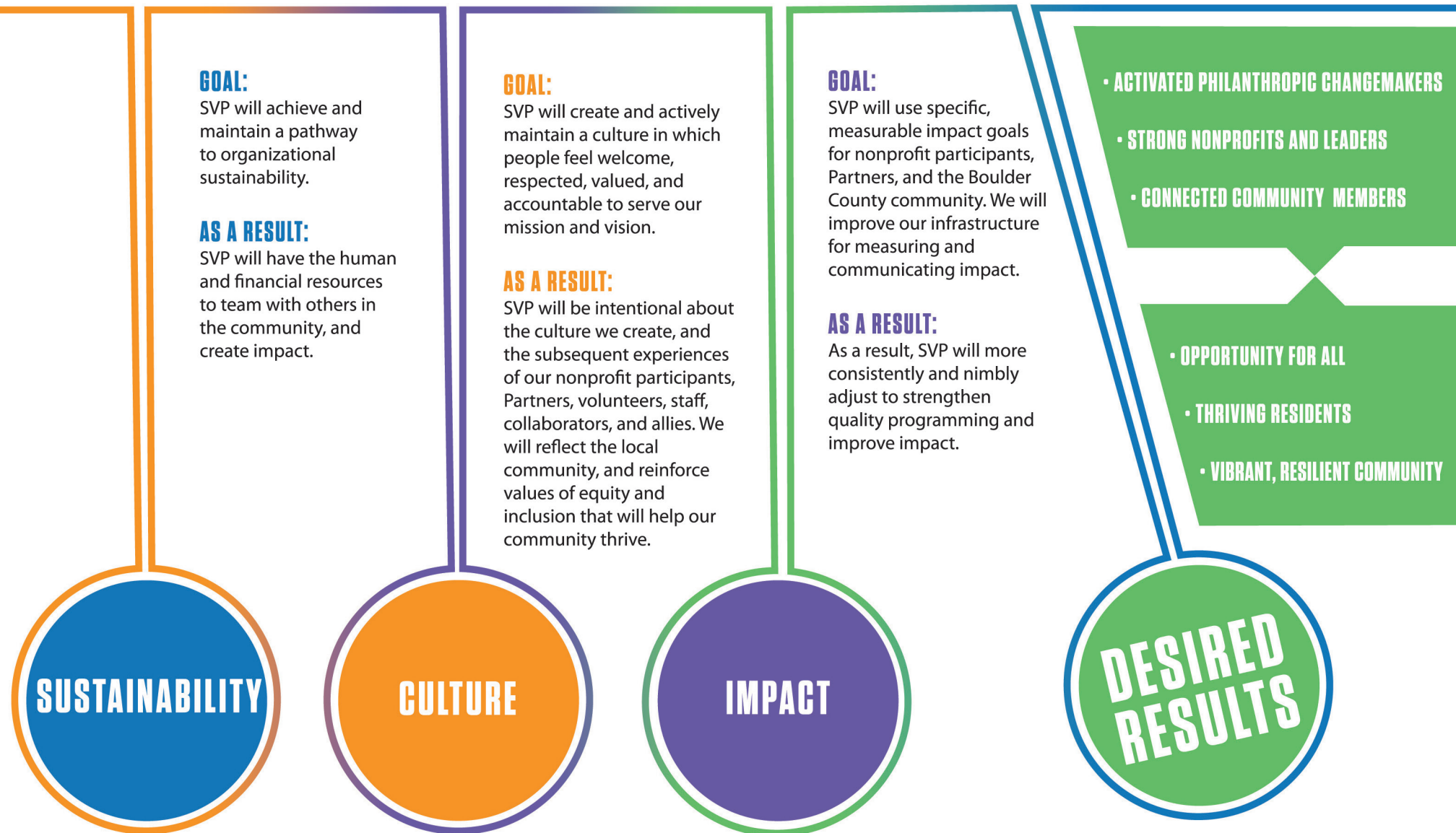
"Through a strategic planning process, the Catapult program moved us in the right direction. In addition to the work we accomplished, what really helped us was the human resources audit and board development, which gave structure and direction to our organization that all of our constituents and stakeholders could coalesce behind. SVP Boulder County also worked with us on infrastructure to accomplish our goals."

Jacob R. Harmon, Catapult participant
Executive Director, Voices For Children CASA
(Court Appointed Special Advocates),

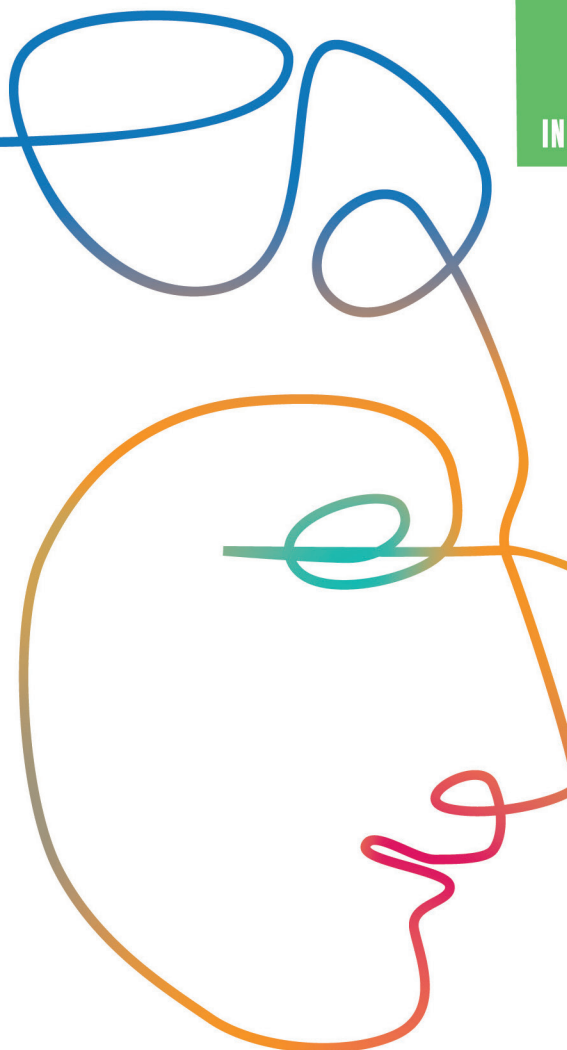
Unifying Strategy and Action

SVP Boulder County is at a pivotal juncture. We're choosing to stretch ourselves to fully achieve our potential in co-creating a resilient community. We want to live in a place where residents are more engaged, ensuring that everyone who lives here has the opportunity to thrive. To do so, we've honed our priorities to the following three crucial goals.

SVP's four-year strategic plan provides a roadmap for how to effectively apply our resources and work to accomplish these goals, leading to the better future we envision for Boulder County; our new plan also provides a touchstone of our collective commitment, insight, and action on which we can continue to build.



SVP HOLDS ITSELF TO THE SAME STANDARD WE ASK OF OTHER NONPROFITS BY CONTINUALLY IMPROVING OUR INTERNAL FUNCTIONS.



In tandem with an extensive strategic planning process, SVP turned the capacity-building lens on itself. We made progress in each of 10 areas of nonprofit business – the same areas we emphasize in our work for and with nonprofit participants. SVP successfully maintained high-quality programs serving nonprofit organizations, local leaders, and philanthropic changemakers while advancing internal priorities to continually refine and strengthen the programs & resources we offer.



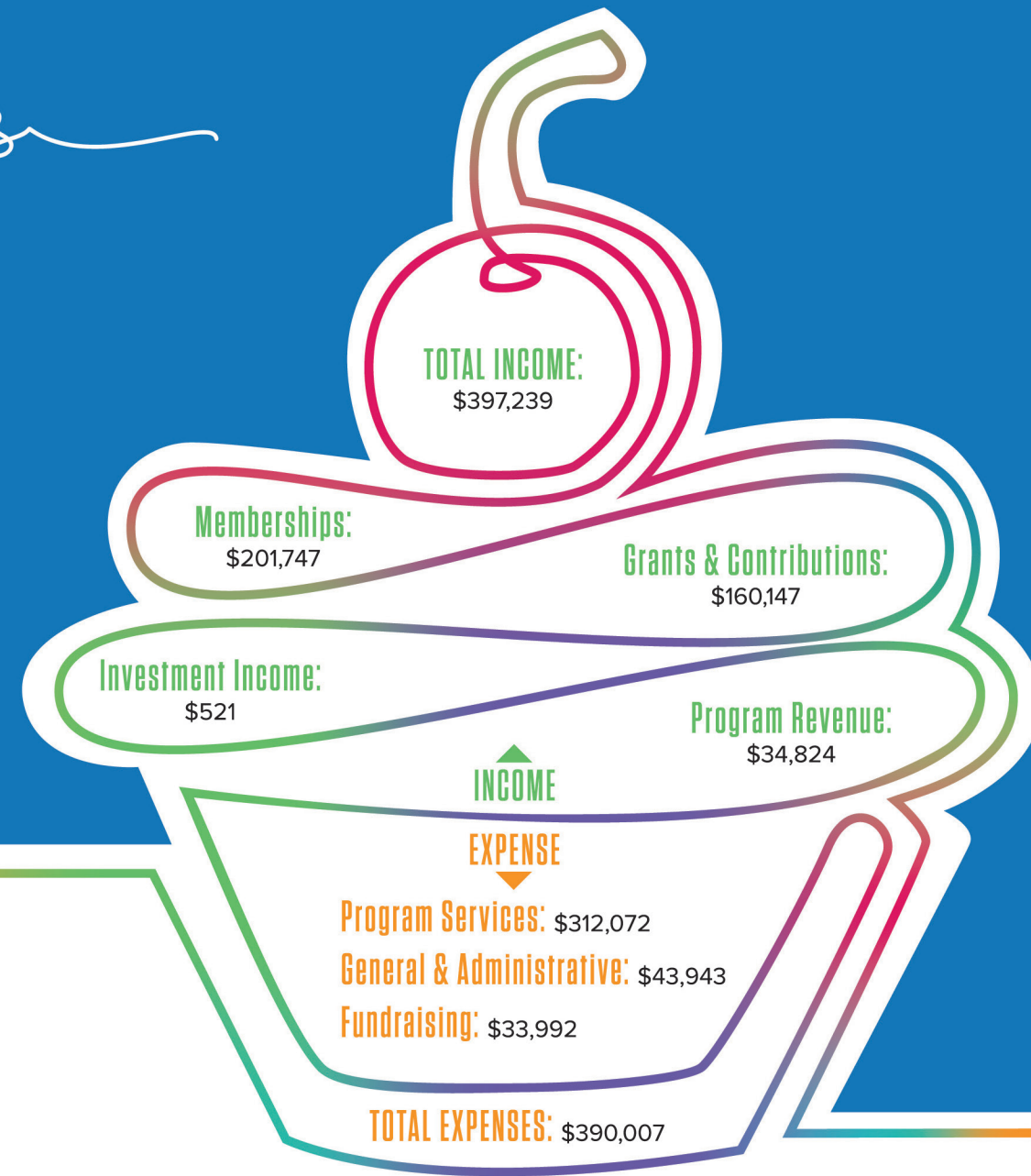
By the Numbers

Partners

Partners make a required annual donation ranging from \$1500 to \$5,000+. Additionally, in 2018, 17 Partners gave beyond their membership donation. These gifts ranged from \$100 to \$60,000.

Donors

Our donors comprise individuals, businesses, and foundations inspired to support SVP's meaningful work directly with nonprofits, community leaders, and philanthropic changemakers.



Find SVP's compiled financials (including Balance Sheet) and IRS 990 at socialventurepartners.org/boulder-county/about-us/financials/



2018 Financial and In-Kind Contributors

Ad Hoc Foundation
AmazonSmile Foundation
Amy Batchelor and Brad Feld
Amy Maranowicz
Amy Ogilvie
Ball Corp
Bank of the West
Barbara Truan
Bob and Leslie Cutler
Bruce Holland and Dianne Ladd
Carol (Corky) Dineen
Chrissy Sollenberger
Christy Bergman
Claire Clurman
Clyde and Harriet McKenzie
Community First Foundation
Community Foundation Boulder County
Daily Camera
Dan and Robin Catlin
David Bachrach
Deborah Malden and Michael Donovan
Dennis Berry
Diane Czarkowski
Ed Victor
Ellen Greenhouse and Lester Wall
Ellen Kirk
Elizabeth Stands
Erik Bernstein
Evelyn Logan
Fidelity Charitable
Gary and Janet Jacobs
Hal and Lynn Brown
Heather Loeb

Hope Tuck Hanrahan
Howard P. Colhoun Family Foundation
Jeanette Marquess
Jeff Blattner
Jennie Arbogash and Tim Whittaker
Jeremy Yazinski and Betsy Holmes
Jodi Grossman
Jonathan Lehmann
John McCorvie
Jon and Liz Hinebauch
Kay Clagett
Kay Paine
Kara Penn
Keith and Ali Kegley
Kingsbery, Johnson & Love, LLP
Larry Rothenberg
Lauren Craft
Lee Shainis
M'Lyn Corzatt and Kyle Schultz
Mark Bouzek and Deb Parks
Mary Merritt Wolf
Merrill
Michelle Orge
Molly Ganley

Nia Wassink
Patricia Burgess
Peak Asset Management LLC
Peter Spear and Laurie Hathorn
Randi Grassgreen and Tim Rohrer
Ranelle Randles
Rebecca and Rob Alderfer
Renewable Energy Systems Americas Inc
Richard Polk
Rich Hoops
Robert and Dita Hutchinson
Roland Evans
Ruth and Bruce Henderson
Ryan Patterson
Schwab Charitable
Shannon and Andy Sackmann
Shawna Peterson
Spencer Downing and Sarah Ford
Spencer King
Stephanie Wilson
Stephen Starzec
Sue Brundege
The Edmund T & Eleanor Quick Foundation
The Wolf Family Foundation
Tim Watson
Tom Briggs
Tony and Elisa George
Vanguard Charitable
Vicky Johns and Arnie Jacobson
Walt and Linda Pounds
Wells Fargo Philanthropy Fund

Social Venture Partners Boulder County (EIN 46-1384125) is a team of people working in community for our community. Since 2000, we have grown around our shared belief that strong nonprofits deliver better results and engaged, educated philanthropic changemakers have greater impact. We build the capacity and capability of Boulder County nonprofits through programs delivered by our Partner members in the areas of training, leadership development, and consulting services. After 18 years, we have provided more than \$6.8M value in pro-bono consulting, mentoring, coaching, and education and more than \$1.6M in supporting cash grants to some 170 Boulder County nonprofits.



2019 Board of Directors

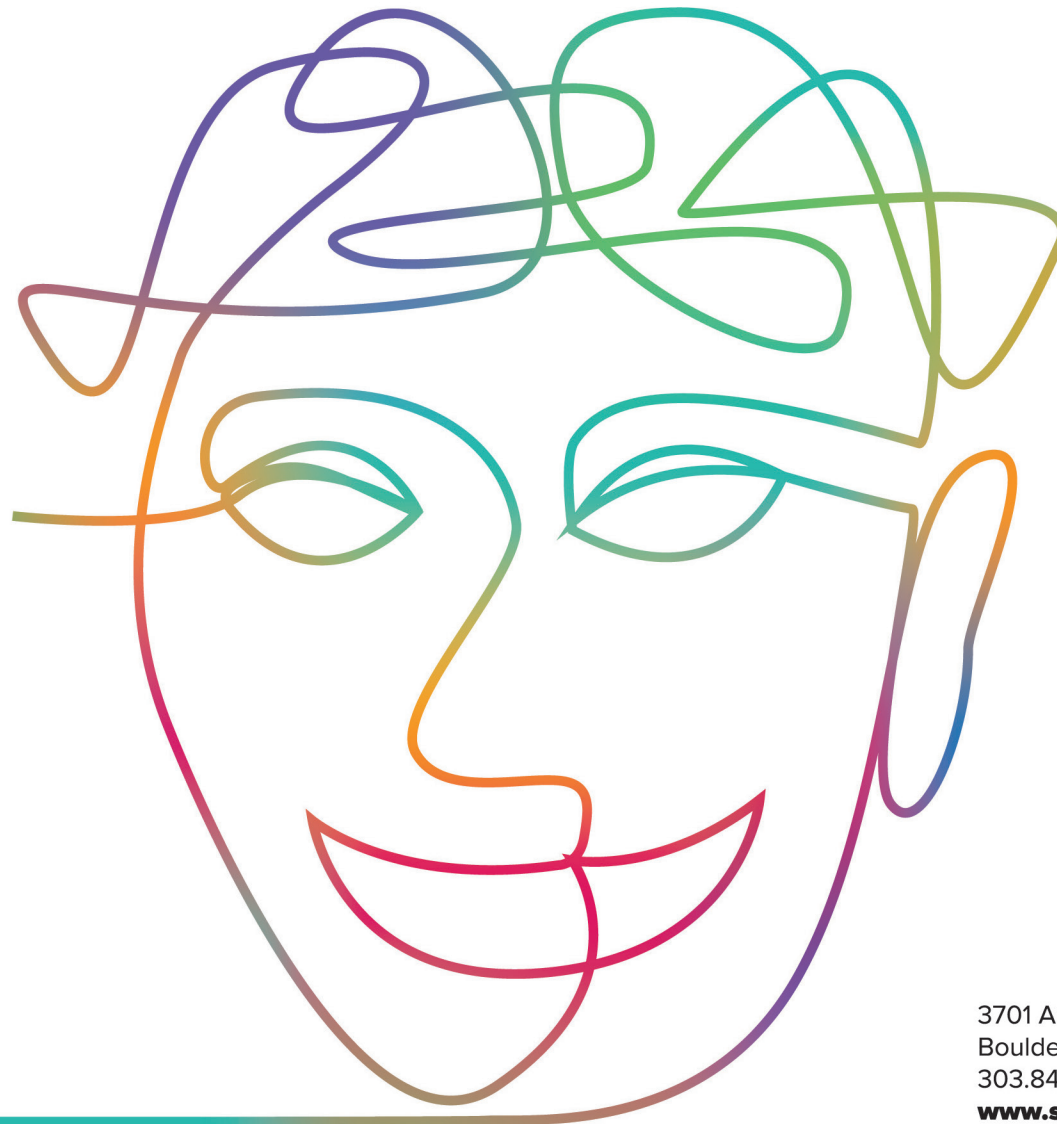
Dennis Berry, Chair
Claire Clurman
Molly Ganley
Tony George
Randi Grassgreen
Deborah Malden
Amy Maranowicz
Jeanette Marquess
Amy Ogilvie
Peter Spear
Tim Watson
Stephanie Wilson

2019 Staff

Jennie Arbogash,
Chief Executive Officer

Shannon Sackmann,
Chief Relationship Officer

Spencer Downing,
Program + Volunteer Officer



3701 Arapahoe Ave. #C117
Boulder, CO 80303
303.840.0165
www.svpbouldercounty.org